

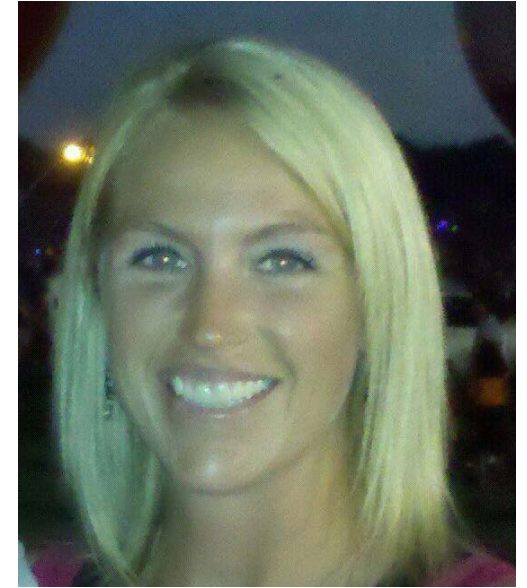
COACH FULLER

Christina Fuller is back for her third season with the Lady Wildcats. Coach Fuller was born and raised in Plano, TX. She grew up playing club soccer for the Texas Longhorns and Sting Soccer Clubs as well as being a member of the Plano East High School Lady Panther's Varsity Soccer Team. After high school, Coach Fuller received a soccer scholarship to play for the D-1 Lady Lobos at the University of New Mexico.

While attending UNM, Christina coached several soccer camps as well as a youth team for Zia Soccer Club. A career ending injury received at the end of her sophomore year took her from playing in New Mexico to coaching in Springfield, MO.

While finishing her degree in Elementary Education at Missouri State University, Coach Fuller began working at Lake County Soccer where she was the Youth Programs Director and League Registrar. She also started a TOPSoccer program for children with disabilities. Outside of work, Coach Fuller spent her time coaching several teams for Springfield Soccer Club. In 2003, Christina went out on her own, with the help of 5 time National Champions JB Marine Soccer Club of St. Louis, and started an all girls soccer club in Springfield. Serving as Assistant Director and Head Coach of four teams, Coach Fuller helped JB Marine-Springfield become the largest and most successful all girls soccer club in southwest Missouri.

Before returning to the Dallas area in 2008, Coach Fuller lived in Casper, WY for about two years teaching PE and coaching for the Casper Soccer Club. During her time coaching, Christina has earned her USSF National D Coaching License as well as a National Youth Coaching License. Along with her duties as Assistant Coach of the Lady Wildcats, Coach Fuller is a mother to an energetic toddler and teaches PE at Lake Highlands Elementary and Moss Haven Elementary.



Assistant Coach: Christina Fuller

LJHS Girls' Soccer

9449 Church Road

Dallas, TX 75238

Voice: 469-593-2003

Fax: 469-593-1030

Email: Christina.fuller@risd.org